

Concert Dress for Senior Groups

Symphony Orchestra, Chamber Orchestra, Chamber Choir, AVE,
Brass Dectet, Wind Octet, Saxophone Ensemble, Percussion Ensemble,
Jazz Ensembles, Chamber Groups (years 12-13)

Black blouse with *elbow-length* sleeves:

Black *ankle-length* skirt/trousers

or

Ankle-length black dress with *elbow-length* sleeves

with

Black socks/tights

Black shoes

No bare shoulders/feet!

or

Black long-sleeved shirt

Long black trousers

Black socks

Black shoes



Denim, t-shirts, short skirts, bare midriiffs,
trainers, DM's etc are not considered as
suitable concert dress

Students unable to adhere to RCM concert
dress codes will not be permitted on stage

Concert Dress for Junior Groups

Sinfonia, String Orchestra, Sinfonietta, Symphonic Wind Orchestra, Upper Voices,
Junior Choir, Brass Ensemble, Chamber Groups (years 1-11)

White blouse with *elbow-length* sleeves

Black *ankle-length* skirt/trousers

with

Black socks/tights

Black shoes

no bare shoulders/feet!

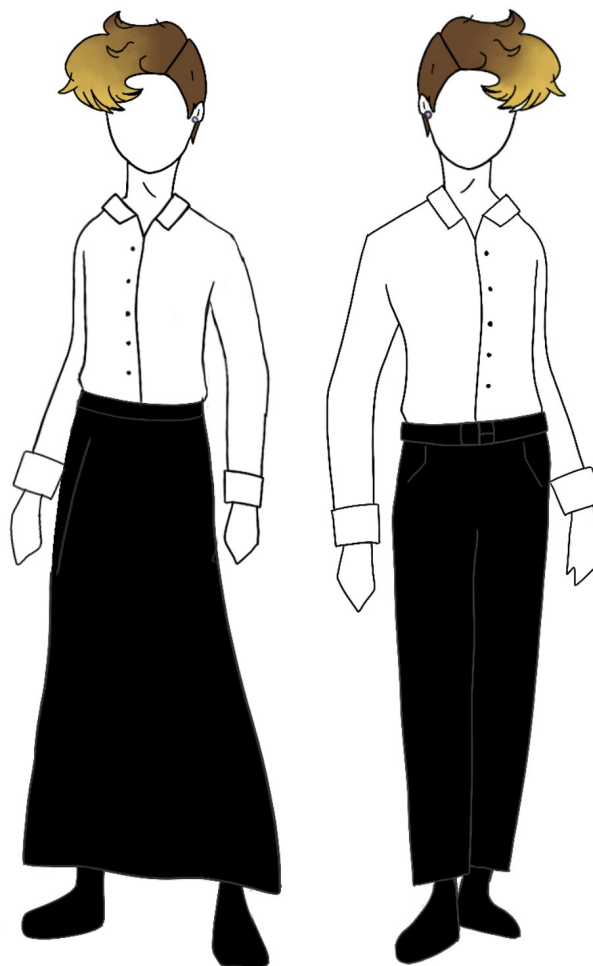
or

White long-sleeved shirt

Long black trousers

Black socks

Black shoes



Denim, t-shirts, short skirts, bare midriffs,
trainers, DM's etc are not considered as
suitable concert dress

Students unable to adhere to RCM concert
dress codes will not be permitted on stage